

GShutdown 0.2 per Mandriva 2008.1

GShutdown 0.2 è un avanzato programma di arresto del sistema che permette di pianificare lo spegnimento, il riavvio del computer o il logout della sessione.

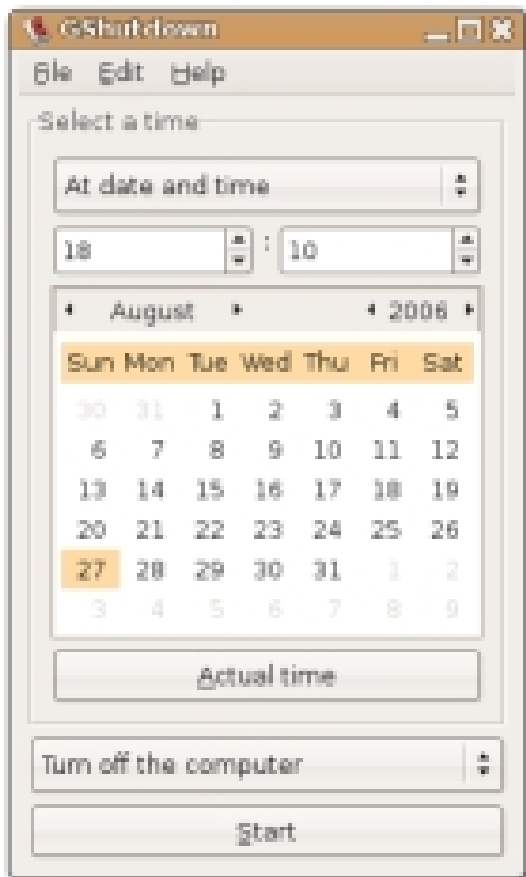
Requested rpm: from volapyk user, [here](#) the Forum link.

Official website: <http://gshutdown.tuxfamily.org/en/index.php>

Description:

GShutdown is an advanced shutdown utility which allows you to schedule the shutdown or the restart of your computer, or logout your actual session.

Screenshot:



Changelog:

2007-06-23 Achraf cherti

* Italian translation added (thanks to Andrea Carnaroli).

2007-06-22 Achraf cherti

- * Russian translation updated (thanks to Andrew V. Sichevoi).

2007-06-11 Achraf cherti

- * Catalan translation updated (thanks to Siegfried Gevatter).

2007-06-10 Achraf cherti

- * "Plural-forms:" added in es.po, no.po and ru.po.
- * gdm.c call is replaced by gdmflexiserver commad (because we have a communication problem with this session manager.
- * French translation updated
- * Portuguese (pt.po) translation updated (thanks to Rolando Pereira).

2007-05-19 Achraf cherti

- * ngettext support (plural forms)

2007-05-08 Achraf cherti

- * gdm.c updated from gnome-panel 2.18

2007-02-18 Achraf cherti

- * all dialogs are shown in the mouse position
- * main_window callbacks moved to callback_main_window.c
- * all main_window and about_dialog signal connection uses now the glade_xml_signal_autoconnect().

2007-02-08 Achraf cherti

- * Polish translation added (thanks to Kristopher)

2007-02-04 Achraf cherti

- * Italian translation updated (Thanks to Andea Carnaroli)

2007-02-02 Achraf cherti

- * Serbian patch applied to gshutdown.desktop.in
- * HACKING updated (translation notes)

2007-02-02 Maxime Cheramy

- * Serbian translation added (Thanks to Miloš Popović)

2007-02-01 Achraf cherti

- * ngettext is used with plural form in on_btn_notification_date_close() and in gui_set_notification_date()

Packages list:

arch. i686 (32bit default)

gshutdown-0.2-69.1mib2008.1.i686.rpm

arch. x86_64 (64bit default)

gshutdown-0.2-69.1mib2008.1.x86_64.rpm

Porting: from Dago68

Packaging/Build: Dago68