

### Kmldonkey 2.0.5 for Mandriva Linux 2010.0

frontend for the MLDonkey P2P core

#### Homepage:

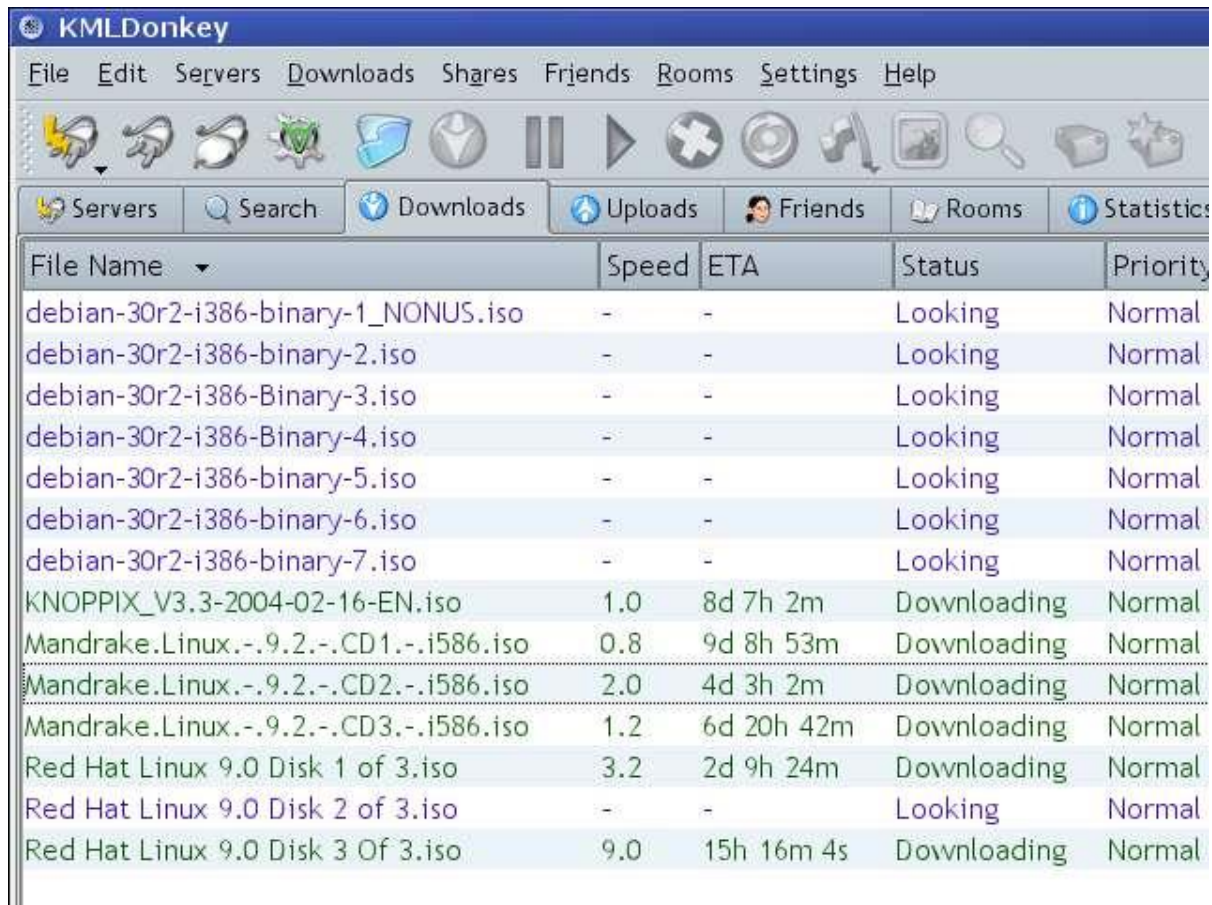
<http://userbase.kde.org/KMLDonkey>

KMLDonkey is an advanced GUI frontend for the [MLDonkey](#) P2P core.

Here are some key **features** of KMLDonkey:

- A flexible, powerful and KDE Style Guide compliant graphical interface.
- A complete implementation of the MLDonkey GUI protocol, meaning KMLDonkey can do everything the original GUI does, and more.
- Advanced configurable search forms.
- A convenient and configurable on-demand MLDonkey launcher.
- Real-time graphical bandwidth and network statistics.
- MobileMule middleware for controlling your MLDonkey using your Java enabled mobile phone.
- Embedded previewing of all downloads using KParts viewers.
- Embedded web browser providing P2P related web services such as availability and fake checks.
- KDE panel applet and system tray icon for statistics and easy access to the GUI.
- KIOSlave for opening current and complete downloads in all KDE applications (eg. "mldonkey:/Default/downloading/")
- Setup wizard for easy installation of the MLDonkey core.

**Screenshot:**



**Diamo un caloroso benvenuto al nuovo packager**

**Luis Daniel Lucio Quiroz**

**MIB Nickname: ruperto**

---

**Porting:** *ruperto*

**Build:** *ruperto*